



**Mobile Straßen**

**RENT  
BUY  
SERVICE**

## **SYSTEMA** **Classic**

**Material:**

break-proof polyethylene

**Dimensions in mm:**

492 x 492 x 34

**Weight per panel:**

Approx. 1,48 kg

**Surface and colour:**

Grau

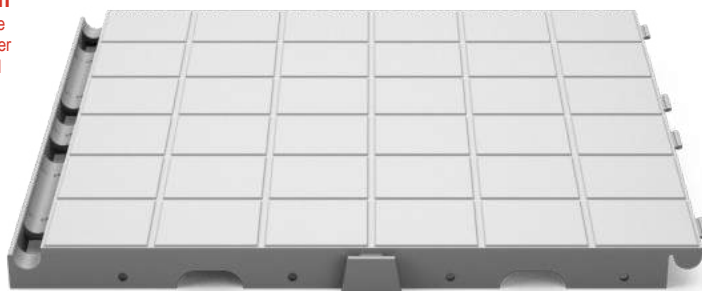
**Load capacity:**

approx. 2t (Depending on the surface)

**Transport per truck:**

24 pallets (1.200m<sup>2</sup>)

**0.24m<sup>2</sup>**  
usable  
area per  
panel



**Areas of application:**



*Concerts and  
events*



*Temporary  
walkways*



*Mobile parking  
lots*



*Decorative  
event floors*



*Tent floors*

